



# EXECUTIVE MBA

16 OR 19 MONTHS  
PART-TIME,  
PARIS



*Make an impact*

MARCH 2025

FR | EN

# LET'S COMMIT TO FUTURE GENERATIONS



The world is faced with major economic, societal, environmental and technological challenges. In line with the humanist tradition embedded in the vision of the School's founders, EDHEC's reason for existence, the desire to make a positive impact on the world, now drives our community even more passionately. Our strategic plan, activities and initiatives are all underpinned by the same ambition, namely **to work together for the benefit of future generations.**

## MOBILISING

Business is a powerful lever for global improvement that must be employed for the benefit of future generations. The climate and our planet require it. To this end, we are mobilising all the School's human, financial and technological resources to contribute as from today to improving the world of tomorrow.

## REINVENTING

Many of tomorrow's jobs do not yet exist. Technological developments such as those in artificial intelligence (AI) are remodelling businesses from top to bottom and offering hitherto unmatched potential for action. For young generations who aspire to careers with meaning, this progress provides a unique opportunity to make a positive impact. Our programmes promote new ideas by opening up each student's academic horizons. Furthermore, we are very attentive to the desire for business creation and are continually on the look-out for innovations liable to transform business and the world in a concrete and positive manner.

## HUMANISING

The need to live together asserts itself more firmly every day. At a time when voices the world over are clamouring for greater inclusion, we believe that human potential can be multiplied by the respect for differences, recognition for all and self-fulfilment through knowledge and learning. Every day, we strive to reinvent the student experience in order to build understanding and act tangibly within our community to ensure that the common goal of every activity is reset to benefitting humankind.

EDHEC has stood out for over 100 years for its desire to improve the world and its ability to anticipate major transformations. Today, we are proud of our recognition every year as one of Europe's best business schools; proud of our intense innovation in education, training and research; and certainly proud of staying true to our mission to **make a positive impact on the world.**

# LEAD THE TRANSFORMATION YOU, YOUR CAREER AND THE BUSINESS WORLD NEED

The EMBA experience is a **unique and personalised journey** designed for experienced professionals, decision-makers and entrepreneurs looking to make a personal and professional transformation. The Executive MBA will help you to **develop yourself and your career ambitions, to gain new perspectives and insights** and to build and consolidate a solid understanding of the key aspects of business management and strategic decision-making relevant on a local and global level.

- Consolidate and extend your executive-level skills and knowledge, enabling you to **refine your strategic, financial and business leadership competencies and personalise the programme** to match your personal objectives and situation.
- **Challenge your perspectives, develop new ways of thinking** and approaching complex issues and problems, build **an international network** of experienced professionals to enrich the **personal and collective experience**.
- **Reflect, review and refine your approach to leadership** and your career. Develop your capacity to **lead with confidence and authenticity**. The EMBA gives you the support and inspiration you need to achieve **your personal and professional goals**.

*"The Executive MBA is a life-changing journey designed to help you develop the necessary leadership skills, global perspectives, and strategic vision to enable you to accelerate transformation in both your career and your organisation. The programme will equip you with the tools to drive innovation and create value for your organisation, whilst giving you a new an international network to enable you to stay ahead in today's competitive landscape."*



**Véronique  
CARRESSE, MBA**

EDHEC Executive MBA  
Programme Director

## EDHEC Executive Education rankings & accreditations



**#26**

Executive MBA worldwide

**#1**

Worldwide for  
Alumni Satisfaction

**#4**

Worldwide for Corporate  
& Social Responsibility

**#5**

Worldwide for  
Open Programmes

## Executive MBA degree

- Master of Business Administration
- Grade Master recognised by the French Ministry of Higher Education
- Triple accreditation:



JOIN AN INSPIRING, DIVERSE AND EXPERIENCED COHORT

# OPEN UP A WORLD OF NEW CONNECTIONS

The EDHEC Executive MBA is an enriching, human-centric experience which is particularly rewarding and impactful due to the diversity and collective strength of the class and the international alumni network you will join when you embark on the programme.

## An exceptional & unique cohort every intake

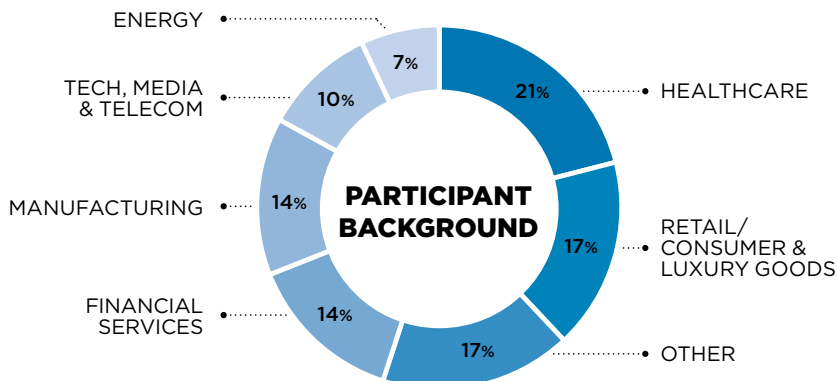
There is no typical profile or standard blueprint for a participant because we carefully build each cohort based on individual merit, experience and potential combined with our aim to ensure a diverse and inclusive class to provide a stimulating, challenging and real-world environment.

**But here is a glimpse of what our current class looked like in 2024.**



## Is the EMBA right for you?

If you have at least 5 years of management experience and are ambitious to develop yourself, improve your leadership skills and strategic business management capabilities whilst you continue to work, then the Executive MBA could be an ideal choice for you. Participants come from all different sectors, industries and countries - one of the biggest benefits of joining the programme is the diversity of the cohort and the wider international alumni network.







## Benefits for you

The EDHEC EMBA is a part-time programme designed to equip you with the insights, knowledge and personal resolve to **lead the transformation your career and your business need**.

EDHEC's entrepreneurial DNA shapes the EMBA programme from the high relevance and quality of our elective options, to the business experience of its professors.

The hard and soft skills you hone during the programme are immediately relevant to developing your career with your current organisation, in a new environment, or launching your own business.

- **Develop a strategic mindset and global vision** to enable you to drive transformation, solve complex problems and lead innovative sustainable business solutions
- **Reset, refine and refresh your perspectives** and gain new insights and inputs as part of a diverse, experienced and dynamic international cohort and network
- **Align the EMBA to match your own business and career ambitions** with a choice of electives and our unique Transform360 personal & leadership development programme
- **Personalise your experience** with a choice of electives or a healthcare track, and choose the duration which suits your workload

## Benefits for your business

Develop & support your most talented people, equipping them with the leadership skills and the vision needed to drive positive transformation, navigate the challenges in your business and create sustainable value for your organisation.

**The part-time EDHEC EMBA will help you to develop leaders who will be able to lead and anticipate change** from both a business and technology stand point. The goal is to help you to understand complexity and see the bigger picture in the ever-changing global landscape to drive innovation and sustainable value creation for you, your clients and your organisation.

Because the Executive MBA is part-time and a balanced combination of theoretical and action-learning, **your organisation will see the benefits from day one** as participants develop and refine their strategic, financial and leadership capabilities learning from leading academic and business experts in one of Europe's top 10 business schools.

During the programme, participants are required to complete a **consulting project or Business Plan which can be directly related to your organisation** and present a solution to a current, real-life issue or opportunity, creating a clear and tangible return on investment.

A PROGRAMME DESIGNED FOR IMPACT

# EXPERIENCE REAL-TIME TRANSFORMATION



**16-month part-time programme** = 74 days out of the office. With option to extend to 19 months



**4 months of elective choices** or a **specialised Healthcare, Innovation & Technology track** or a **24-month Expert option** including the track and electives



**Paris**



**2 international business trips**



**March or October**



**Rhythm adapted to work-life balance**



Features **Transform360**, a unique, personalised Leadership & Professional Development Programme



**12 months of core strategic business fundamentals**



**Individual Consulting Project or Business Plan**

**BUILD YOUR STRATEGIC VISION**

**EXPAND YOUR HORIZONS**

**TRANSFORM360**

**PERSONALISE YOUR PROGRAMME**

**MAKE AN IMPACT: CONSULTING PROJECT OR BUSINESS PLAN**



# BUILD YOUR STRATEGIC VISION

Consolidate and enhance your strategic, financial & business management expertise with the core strategic & business fundamentals, enabling you to **see the bigger picture** and **enhance your decision-making skills**.

## 1 Strategy & Leadership

- Strategic Analysis
- Strategic Management
- Business & Society
- Business Models for Sustainability
- Leadership & Management
- Organisational Behavior
- Human Resources

## 2 Financial Management

- Financial Accounting
- Corporate Finance
- Managerial Accounting & Controlling

## 3 Marketing & Operations

- Marketing Management
- Sustainable Marketing Strategy Simulation
- Operations Management & Supply Chain
- Legal International Business
- Business Ethics & Diversity, Equity & Inclusion

*"The EMBA blends academic excellence with hands-on experience, ensuring that you are exposed to real business challenges and have the insights and understanding to conceive and implement innovative strategies and solutions. To succeed, leaders need to be agile and able to navigate complex and constantly changing scenarios, and the EMBA curriculum is designed to help you and your business thrive and excel in any environment while also aligning with broader societal and environmental imperatives."*

**Joëlle Vanhamme, Ph.D.**

Executive MBA Academic Director, Full Professor - Department of Marketing



MAKE GLOBAL CONNECTIONS

# EXPAND YOUR HORIZONS

## Discover new business models

**Broaden your perspectives**, build a diverse and **international network** and gain a deeper insight into emerging markets, different environments and the challenges and opportunities of a connected world. The business world is now global. Companies have to deal with both local and international competition, from developed as well as emerging economies. The Executive MBA curriculum offers two **Global Business Trips** to give you hands-on experience of another culture, economy and competitive context.

### GAIN UNIQUE PERSPECTIVES AND INSIGHTS OF 2 KEY REGIONS DURING THE GLOBAL BUSINESS TRIPS.

During the week-long business trips you will gain invaluable knowledge around the political and economic environment in the country, together with an overview of the country's history and culture. This theoretical foundation is complemented by company visits where you get to see first-hand how businesses are adapting to the challenges and opportunities created by our globalised economy. The programme encourages discussions and exchanges of points of view. It makes it possible for you to develop strategic insights and to acquire new modes of managerial thought. Destinations change each year to reflect changing market dynamics.

### DEVELOP STRATEGIC THINKING

The **Global Business Report** is a teamwork exercise undertaken after each business trip. It aims at enhancing your ability to 'think strategically' by integrating company-wide issues and critical thinking. It offers a great opportunity to train yourselves in business modelling and in the right expression of a business model.

### ADDRESS BUSINESS ISSUES ON A GLOBAL SCALE

You will be immersed in an international environment throughout the duration of the programme. You will be working on case studies tackling global issues. Core course modules such as 'Economy and Global Environment' will help you understand the realities of doing business in a global environment.

### BUSINESS IN EUROPE

A 2-day seminar (including one day in Brussels) to understand the functioning of European institutions and the impact on business management of the Northern European ecosystem.



# PERSONALISE YOUR PROGRAMME

Tailor your programme to provide new perspectives or **go deeper into specific areas that are important to you**, your career and your organisation. Choose between **electives** or **Healthcare Innovation & Technology Track**.

## Elective choices

Choose up to 7 electives from a choice of innovative, challenging & business relevant subjects. Examples include:

- **Entrepreneurship & Innovation**
- **AI and Digital Ethics & Sustainability**
- **Digital Marketing Strategy**
- **Managing Digital Transformation**
- **Strategic Foresight: Methods and Tools**
- **New Business Design and Innovation**
- **Positive Leadership Habits**
- **Sales and Business Management**
- **Criminal Risks Management**
- **Luxury Brand Management**
- **Financial Markets Organisation**
- **Managing Difficult Negotiations**
- **Top priorities of inhouse counsel (in French)**



## Choose the Healthcare Innovation & Technology Track

This option is designed to equip healthcare managers & professionals with a global business vision to lead with confidence in the fast-changing health eco-system.



**HEALTHCARE STRATEGY  
& NEW GAME CHANGERS  
IN HEALTH 2.0**



**LEADING HEALTH  
INNOVATION IN  
THE DIGITAL AGE**



**VALUE BASED  
HEALTHCARE (VBHC):  
NEW PARADIGM  
FOR A PATIENT 2.0**



**DATA AND ARTIFICIAL  
INTELLIGENCE  
IN HEALTHCARE**



**MEDICAL DEVICES  
AND DIAGNOSTICS**



**HEALTH CARE FINANCING  
AND FINANCIAL  
MANAGEMENT**

## **NEW** for 2024/25: **EMBA Expert option**

Choose up to 7 electives and take the Healthcare Innovation & Technology track to create a 24-month programme. March intake only. Please contact us for more details.

# YOUR PERSONALISED LEADERSHIP AND PROFESSIONAL DEVELOPMENT PROGRAMME

Transform360 is designed to develop **your self-management, strategic, functional and relational abilities**. Both a highly personalised and collective journey, it will help you to question, challenge and explore every aspect of your personal, career and leadership development so that you can **harness your full potential in your career, in your business and as a leader**.

**4 KEY COMPONENTS WHICH ARE INTER-LINKED AND DESIGNED TO HELP YOU DEVELOP AND STRENGTHEN YOUR LEADERSHIP SKILLS, COMPETENCIES AND PERSPECTIVES:**



## Leadership & Personal Development

### Your 360 coaching journey

- 360° Assessment and group coaching
- Individual leadership coaching
- Individual career coaching
- Follow-up 360° assessment and group coaching



## Essentials for Inspiring Leaders

A series of 5 modules which blend individual, collective and interactive methods to prepare you to lead with confidence, conviction and agility, even in the toughest situations.

### CONNECT

- Practical Resilience
- Connecting and Building Relationships
- Practical Skills for Networking

### COMMUNICATE

- Confident Communication
- Business presentations
- Feedback session I
- Feedback session II

### COLLABORATE

- Building Effective Teams Seminar
- Team Work Review

### LEAD

- Leadership Mindset
- Paradoxes in Leadership
- Leadership Coaching

### INCLUSION

- Awareness of Fault Lines and Biases
- Acting Inclusively





## + Transform360 Workshops

The EDHEC EMBA experience is focussed on helping you to build the necessary vision, skills and abilities you need to deliver a profound personal and professional transformation.

The Transform360 elective workshops enable you to tailor your leadership and professional learning journey to align with your strengths and needs so that you can develop into an authentic, agile and accomplished leader.

### WORKSHOPS OPTIONS INCLUDE:

- Becoming a strong negotiator
- Managing power and influence
- Managing change
- Boosting your leadership confidence
- Building resilience for stressful and demanding environments
- Collaborating, leading and motivating remotely



## Career & Professional Development

- Professional pitch workshops
- Open Minds conference series
- Alumni network events
- Career & professional coaching

*“Starting this EMBA has been the best decision I made in the past 5 years. I learnt a lot from the “general” courses, but even more from the personal development programme which runs in parallel with the academic curriculum. Also, the interactions with the cohort have a tremendous impact value, giving me insights I would otherwise never have. I felt supported by my peers to be the best version of myself. It is so inspiring.”*

**Sara VAN LEUVEN,**  
EDHEC Executive  
MBA 2023,  
Founder and General  
Manager, Renohub



# MAKE AN IMPACT

Combining high-level, business-relevant academics with action learning, you will **apply your learning from day 1 and beyond**. The individual **Consulting Project or Business Plan** is **your opportunity to demonstrate your strategic vision** & potential to lead transformation focussing on a real-life challenge important to you and the healthcare industry.

## Hands-on, experiential learning

During the programme (or within 3 months of completing your EMBA for those who chose the 19 month option), you will apply what you have learnt and put your new insights, network and experience into practice. You can choose:

- **CONSULTING PROJECT OR ACTION PLAN**

This is a real-world, strategic project created in partnership with your current organisation or major international company

- **BUSINESS PLAN OR ENTREPRENEURIAL PROJECT**

Develop a specific plan to launch your own business or new venture/concept for your current company.

The objective for the projects is to demonstrate your ability to deliver a tangible, strategic solution to a real issue, challenge or opportunity. This is where theory and practice intertwine and your EMBA experience is put to the ultimate test.

## A positive impact on business

You can select the project of your choice, with coaching support provided by an expert member of the faculty. The Consulting Project or Business Plan is presented to a company manager and an EDHEC professor/healthcare expert who assess the clarity and strength of the strategic diagnosis, as well as the relevance of the planned strategy.

*"The Consulting Project has had considerable impact for me career-wise. I worked on a topic that was strategic for my company, which enabled me to go further than the responsibilities I had at the time. It turned out to be very valuable for my company and for me, in a win-win way as it enabled me to demonstrate my capacity to conceptualise and build a strategy, it helped me start a new phase of my professional evolution."*

**Sonia BOTTA,**  
EDHEC EMBA 2018,  
VP Global Citrus at Firmenich



Apply concrete methodology of business-problem-solving



Set out strategic & cross-discipline recommendations



An opportunity to collaborate with national & international corporations

### PREVIOUS CONSULTING PROJECTS INCLUDE:

amazon

AstraZeneca 

CITEOS

elior 

DECATHLON

IBM

IDEXX  
LABORATORIES

 IHS Markit

L'ORÉAL

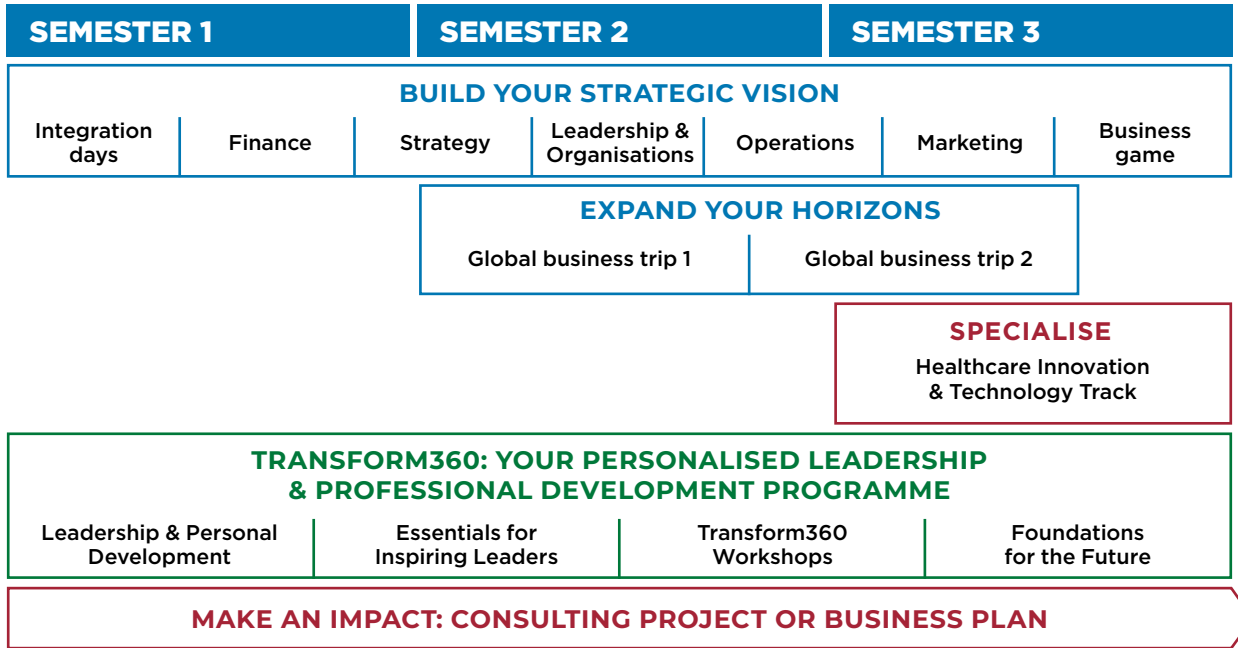
 MARRIOTT

 OVH.com



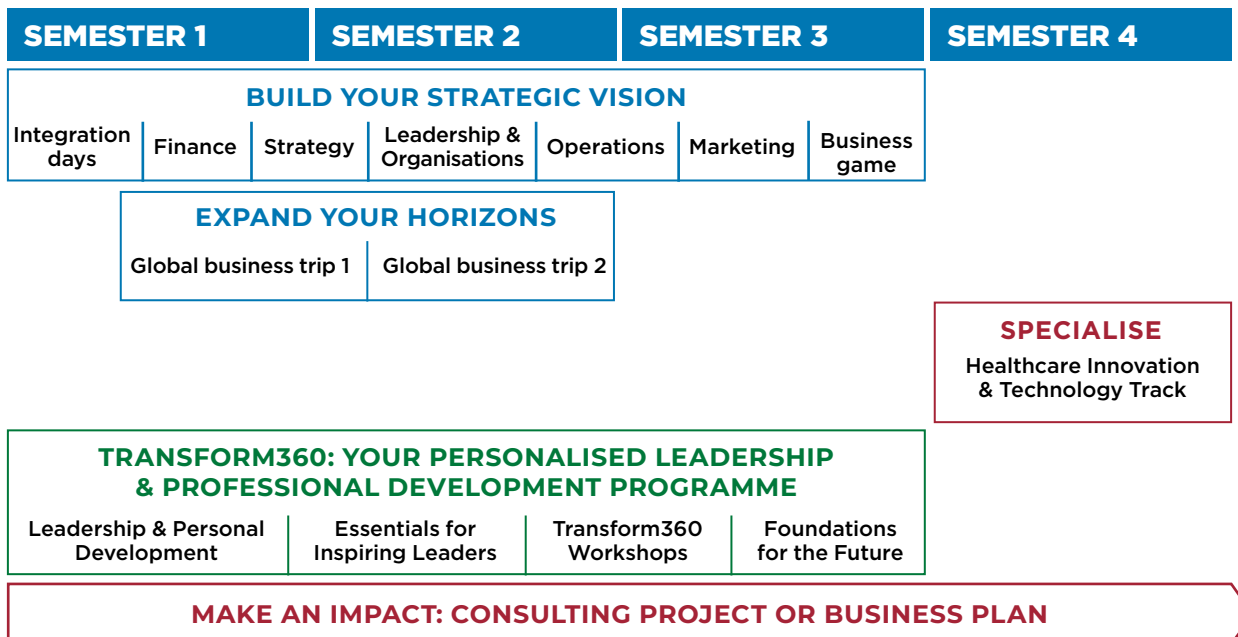
# A BALANCED PROGRAMME COMPATIBLE WITH YOUR WORKLOAD

## 16-month programme: October intake



## 19-month programme: March intake\*

Allows 3 additional months for you to work on your Consulting Project or Business Plan to help you balance your workload and give greater focus to the project.



\*The March intake ends in December the following year

BRINGING THEORY INTO PRACTICE

# A PROGRAMME DESIGNED WITH **BALANCE IN MIND**

High performance and high potential often mean demanding schedules and time being precious. That is why we have carefully constructed the **Executive MBA to give you the optimum balance of time, focus and effectiveness.**

With a part-time Executive MBA programme spanning 16 or 19 months, you can reach higher without sacrificing your work or family life. Our programme offers a life-changing experience by combining inspiring content, business relevance and a rich, diverse cohort.



**LENGTH:**

**16 OR 19 MONTHS  
= 74 DAYS**



**FORMAT:**

**PART-TIME,  
ONCE A MONTH  
(Wednesday to  
Saturday)**



**LOCATION:**

**EDHEC PARIS  
CAMPUS**



**INTAKES:**

**MARCH OR  
OCTOBER**



OUR CAMPUS

# AN EXCEPTIONAL LEARNING ENVIRONMENT



PARIS

## In the heart of Central Paris

Located between the Stock Exchange and the Opéra Garnier, in the prestigious Centorial building, the Campus is symbolic of EDHEC's proximity to the business world.

2

Research centres, in Economics and Financial Analysis

## A privileged venue for executive events

The Paris Campus offers a premier venue for conferences, corporate events and business meetings.

125

events per year

# EDHEC FOR LIFE

The EDHEC Alumni network contributes to developing EDHEC's reputation worldwide and enhances its relationship with the global business community. As an EDHEC Global MBA participant, you automatically become a member of the EDHEC Alumni network for life.

## 60,000 ALUMNI AROUND THE WORLD TO STRENGTHEN YOUR NETWORK

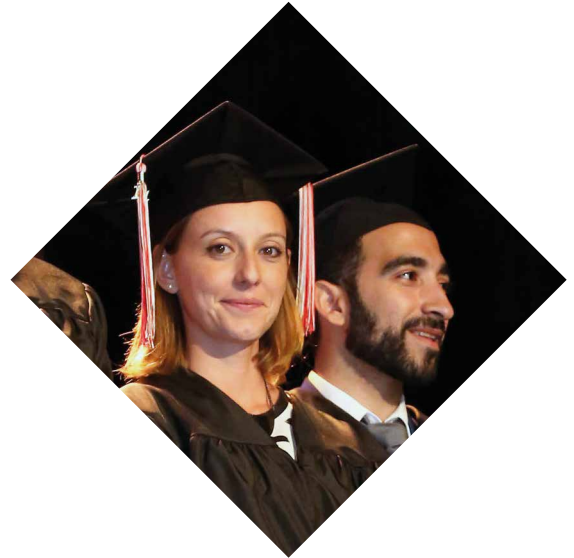
EDHEC Alumni Association links all generations of alumni in order to develop professional and personal links.

## 100 CLUBS IN MORE THAN 40 COUNTRIES

EDHEC Ambassadors coordinate professional clubs all around the world. These clubs drive local networks through numerous professional and social events.

## 450 EVENTS WORLDWIDE EVERY YEAR

EDHEC Alumni organises numerous events every year, creating strong ties between the different generations and extending the reach of the network to local decision-makers.



*"When I chose to do this EMBA, I was not just looking for a degree, I wanted to engage in a deep evolution... and that's what I found at EDHEC! This idea of transformation shows in the curriculum, with a strong focus on coaching and personal development, with the Consulting Project - an opportunity to put our newly acquired knowledge and skills into practice - or with the global business trips - in Vietnam or in Seattle in my case - that fuel our large-scale vision of business dynamics and trends. When you join EDHEC EMBA you join a lively and tightly knit network. Since the very beginning of the programme, I have felt like I was part of a new family."*

**Vito CAVALIERE**

EDHEC MBA 2017  
Head of Discretionary Portfolio Management, BNP Paribas

*"EDHEC helped me to understand who I really was and what I would excel at in life. It helped me to make the right decisions. There's an overall culture of agility at EDHEC; it really gave me the opportunity to make important decisions early in my life, decisions that still affect my life today."*

**Michael BURKE**

CEO of LVMH Fashion Group  
EDHEC Master 1980






## RESEARCH

# EDHEC FOR BUSINESS

As a driver of change for future generations, EDHEC strives to transmit knowledge that is useful — for students, for business partners, for communities — and that has the capacity to transform our society.

## RESEARCH WITH IMPACT

EDHEC's mission is to transform society through the education of future generations of leaders and innovators. The school devotes more than 20% of financial resources to research, a reflection on the central role research plays in the school's business model. EDHEC's students and business partners benefit from the contributions made by the school's research centres and the guidance they provide in terms of domestic and international decision-making.



*"It's our responsibility to ensure EDHEC's research resonates not only with the students in our academic programmes, but also with society. It's vital to be rooted in the real world, to use our knowledge to assist with future transformations, and to work relentlessly for change."*

**Michael Antioco, PhD**  
Dean of Faculty and Research,  
EDHEC Business School

## Research & areas of expertise



### Augmented Law

The EDHEC Augmented Law Institute provides cutting-edge research on the law and legal professions transformation, alongside hybrid training programmes, and a proprietary Legal Talent Management platform.



### Criminal Risks Management

The EDHEC Criminal Risks Management chair conducts immersive research into the impact of criminal organisation activity on businesses.



### Diversity & Inclusion

The Open-Leadership for Diversity and Inclusion chair is dedicated to improving diversity and inclusion in organisations.



### EDHEC-Risk Climate Impact Institute

EDHEC-Risk Climate Impact Institute helps private and public decision makers manage climate-related financial risks and make the best use of financial tools to transition to low-emission climate-resilient economies.



### Family Business

The EDHEC Family Business research centre offers an holistic approach to family business.



### Foresight, Innovation & Transformation

The EDHEC Chair for Foresight, Innovation and Transformation, focuses on the development of companies' ability to embrace uncertainty.



### Infrastructure Investment

The EDHEC-Infrastructure Investment generates unique index data and analytics to measure the risk-adjusted performance of unlisted infrastructure investments, and benchmarks for infrastructure investors.



### Leadership Development

The EDHEC Leadership Development chair offers interactive learning methods to enable managers to develop responsible leadership skills.



### Management in Innovative Health

Launched in 2022, the Management in Innovative Health is a joint research chair with EDHEC and Bristol Myers Squibb to better understand the consequences of the digital revolution on the healthcare ecosystem and to advance e-health for the benefit of patients.



### New Generations

The EDHEC New GenTalent Centre studies generations Y and Z at work and acts as a laboratory for creating ties between recent graduates and companies.



### Sustainable Finance

The EDHEC-Risk Institute is a leading global academic think-tank in the field of investment solutions (pension crisis, ESG). This area of expertise is also covered by the EDHEC-Scientific Beta "Advanced factor and ESG investing" research chair.

# TAKE THE NEXT STEP

## Fees & Scholarships

Choosing to do an Executive MBA at EDHEC is a great choice to help develop your capacity to lead and to shape your career, but we recognise that it is also a financial commitment and requires planning. Below you will find some details on scholarships and funding options, but please get in touch to get more personalised help and advice.

**Total tuition fees: €52,000 (ex. VAT)\***

These are the full tuition fees (for the March 2025 intake) for the entire length of your Executive MBA & the EMBA with Healthcare Innovation & Technology track (16 or 19 month options). For the EMBA Expert 24-month option including electives and the HIT track, please contact us for details.

**UP TO -30%**

### WOMEN IN LEADERSHIP

To support and promote equality and gender diversity in our class and in the boardroom.

**UP TO -20%**

### CULTURAL DIVERSITY

To support and promote cultural diversity in our class, this scholarship is open to dual nationals and internationals currently working and residing in France.

**UP TO -30%**

### INTERNATIONAL SCHOLARSHIP

For applicants who live and work outside of France, this scholarship is designed to encourage and support participants who are looking to gain and share a truly global vision from one of the leading business schools in France and Europe.

**UP TO -15%**

### INDIVIDUAL FUNDING

For applicants who are personally financing the programme

### EDHEC MBA FORTÉ FELLOWSHIP AWARDS

As a Forté Foundation partner school, we are proud to offer several Forté Fellowship awards of between €10,000 - €20,000 to support outstanding, high potential women candidates.



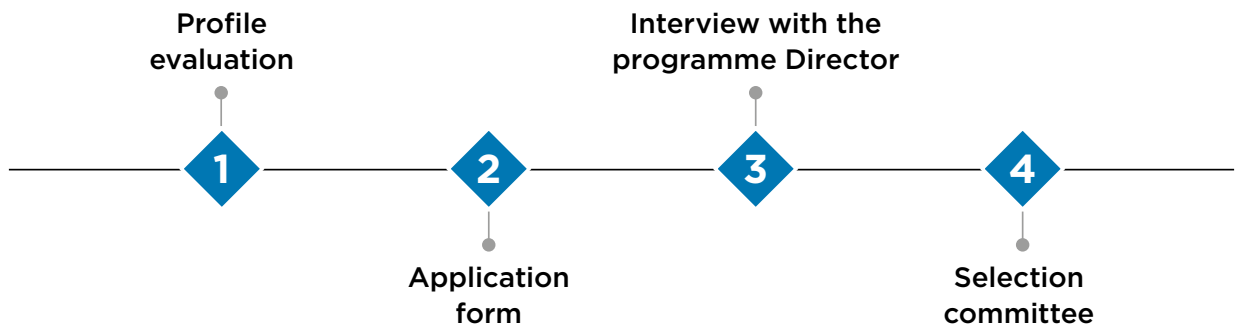
**Diplôme pour Cadres Dirigeants et Entrepreneurs - RNCP 39121**

**Eligible for VAE**

\*Tuition fees are provided for information only and are subject to change

# Admissions requirements

The culture at EDHEC's Executive MBA is an important part of the experience, and we believe it's essential to have a personal admissions process to maintain it. Our admissions team considers every candidate carefully, making sure that you're a good match for the programme, and that the programme is the right fit for you, too.



**Application deadline:  
30<sup>th</sup> June or 31<sup>st</sup> December**

## Get in touch for personalised advice:



**Julie Le Gouëz**  
16-18 rue du 4 septembre  
75002 Paris  
**+33 (0)6 31 91 29 73**  
[executive-mba@edhec.edu](mailto:executive-mba@edhec.edu)



**8,600**  
Students

**#7**

**Business School  
in Europe**

Financial Times 2023

**60,000**  
Alumni in 140  
countries

**#5**

**worldwide Open  
Programmes**

Financial Times 2024

**110**  
Nationalities

**#13**

**Business School  
in Europe**

Bloomberg Businessweek  
Best B-schools 2023/24

**295**  
Partner  
universities



*Make an impact*

**EDHEC.EDU**  
**executive-mba@edhec.edu**

**LILLE**

24, avenue Gustave Delory  
CS 50411  
59057 Roubaix Cedex 1 – France  
Tél: +33 (0)3 20 15 45 00

**NICE**

393, Promenade des Anglais  
BP3116  
06202 Nice Cedex 3 – France  
Tél: +33 (0)4 93 18 99 66

**PARIS**

16-18, rue du 4 Septembre  
75002 Paris – France  
Tél: +33 (0)1 53 32 76 30

**LONDON**

10 Fleet Place, Ludgate  
London EC4M 7RB  
United Kingdom  
Tél: +44 (0)207 332 56 00

**SINGAPORE**

1 George Street  
#15-02 Singapore 049145  
Tél: +65 (0)6438 0030

