



GLOBAL MBA

10 MONTHS
FULL-TIME
NICE



Make an impact

2025
FR | EN

BUILDING AN AMBITIOUS AND OPTIMISTIC FUTURE TOGETHER



Future generations are you, and then those who will follow you and others after them. Those you will inspire, those you will show the way to. At EDHEC, we want to help you blaze these trails. We want the excellence of our programmes, our support and our contacts to be the raw material for the positive changes to which you can contribute.

BUSINESS IS CHANGING, LET'S CHANGE BUSINESS

When everything is turned upside down, anything is possible, and our challenge is to give you the keys to change: for a more sustainable, more responsible business, focused on the major challenges facing society and the planet, for a career that reflects your aspirations and ambitions.

TRANSFORMING THE WAY WE LIVE TOGETHER

In addition to our programmes, the entire EDHEC community is committed to opening up new horizons for you in a caring and enthusiastic way. Firstly, thanks to our campuses, which are conducive to living together. Then, thanks to the professors who work with you every day to help you understand how the world is changing. And finally, thanks to the rich interaction and quality of our lively and vibrant student and alumni communities, crossroads for encounters and sharing.

So, are we going to transform this future?

"Our ambition is to train talented people who want to transform the world of business to put it at the service of future generations: the blending of knowledge and the desire to make an impact will be major assets in training all-round managers, capable of solving society's major problems."



Emmanuel Métais
Dean of EDHEC
Business School

DIVERSE AS THE WORLD, INDIVIDUAL AS YOU

AN INTENSE AND INTERNATIONAL EXPERIENCE

The EDHEC Global MBA is an intensive programme designed to provide you with a highly personalised and truly international experience in under one year. We are proud to be consistently ranked as one of the most diverse and international MBA programmes from our cohorts through to our faculty and curriculum.

A HIGHLY PERSONALISED PROGRAMME

With a choice of electives, a one-month specialisation track with learning expedition, and an 8-week tailored MBA project, you can shape your experience according to the career path you are aiming for. You can also choose to extend your EDHEC experience through internships and/or an academic exchange.

A PROGRAMME FOCUSED ON YOUR FUTURE

The Lead360 personal & career development programme has been specifically designed to prepare you for the next step in your post-MBA journey and your future leadership career by helping you to develop the necessary skills and qualities you will need to drive your career and lead with confidence and conviction in an ever-changing, complex and diverse environment.

"Leaders must develop the vision and skills necessary to lead their organisations to success. Our goal is always to bring out well-rounded, value-driven, inspirational and reflective leaders who make a positive difference to the business world."



Sandra Richez
EDHEC Global MBA
Programme Director



Global MBA rankings 2024



#4

Worldwide for ESG &
Net Zero Teaching

#7

Worldwide for International
Mobility

#12

Worldwide for Value
for Money

#57

Worldwide overall



#8

Worldwide for Return
on Investment



#13

Best MBA in Europe



#15

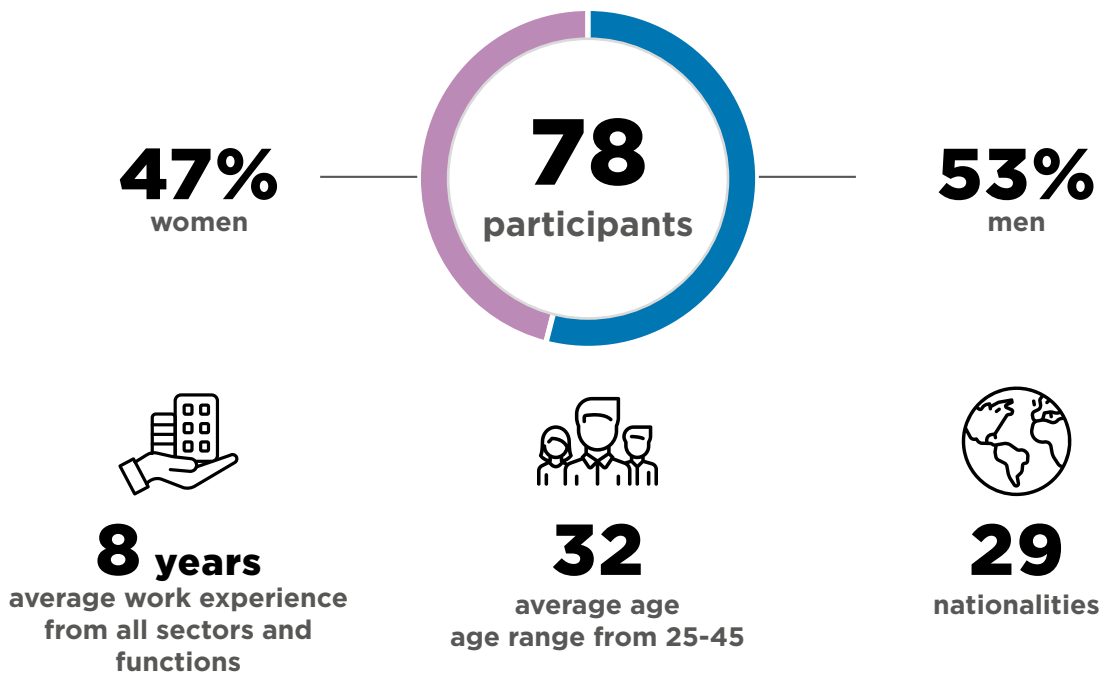
Best International MBA

OPEN UP A WORLD OF NEW OPPORTUNITIES

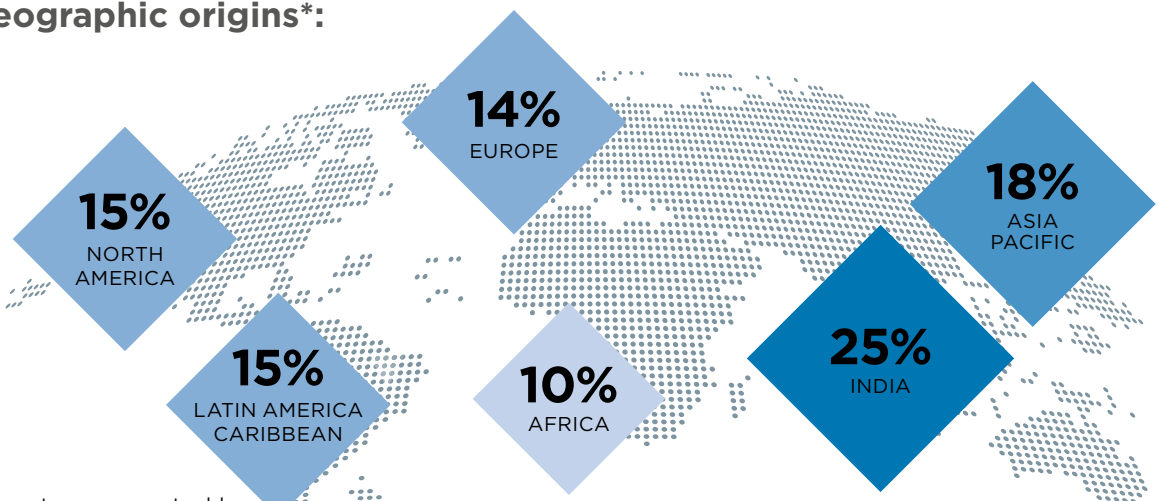
A unique, diverse and international cohort

There is nothing typical or standard about our Global MBA class because we purposely seek to build a cohort which is diverse in every single way. As you spend 10 months working and studying with people from a wide range of nationalities, experience levels and professions, you'll be gaining wisdom from the experience, and sharing the wealth of knowledge that you and your fellow students have to offer.

HERE IS A QUICK LOOK AT OUR CLASS OF 2024



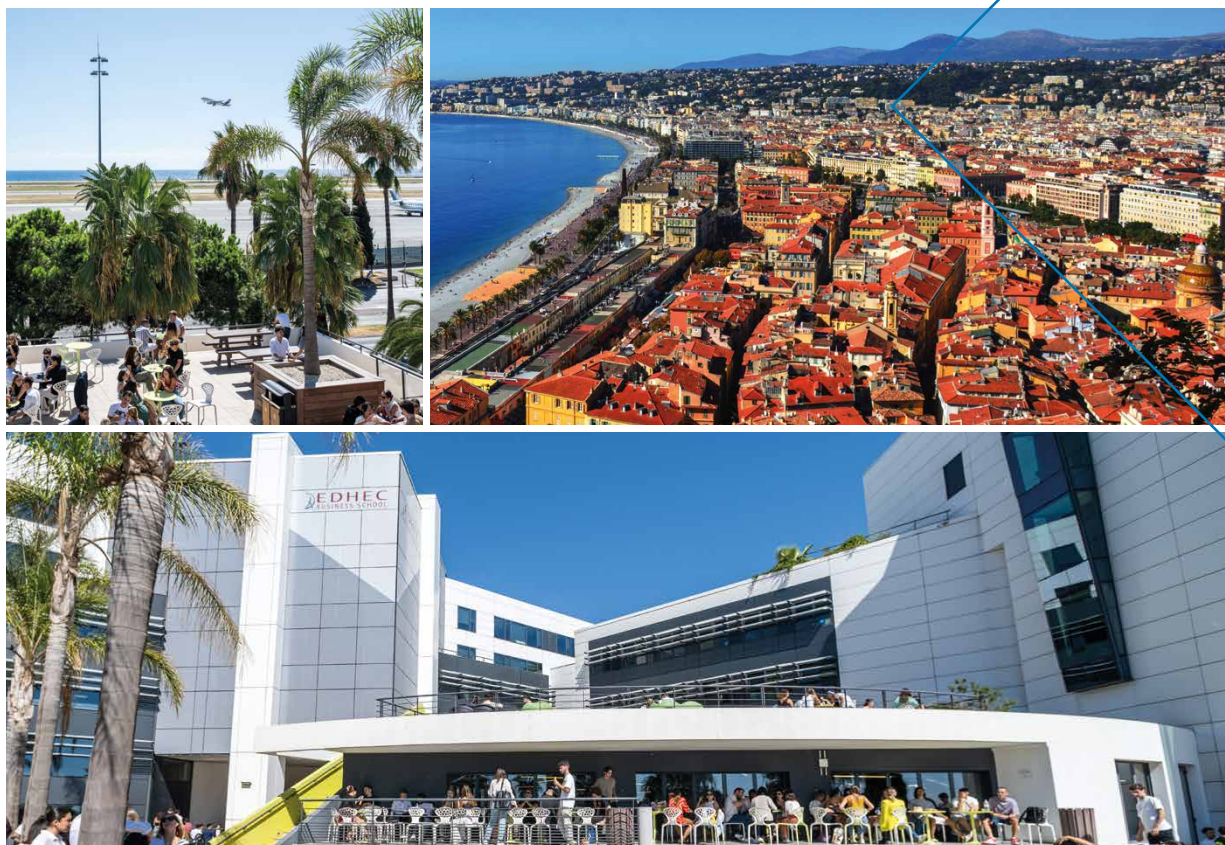
Geographic origins*:



*Percentages may not add to 100 due to rounding

AN EXTRAORDINARY EXPERIENCE DESERVES AN EXCEPTIONAL SETTING

A good study environment contributes significantly to a great MBA experience. EDHEC's campus in Nice is a modern building with rooftop decks overlooking the Mediterranean Sea, conveniently located next to Nice International Airport, just 15 minutes to the beach and the Arenas business district, and a 20-minute tram ride from the city centre.



A MEDITERRANEAN CROSSROADS

With 300 days of sunshine per year, the climate in the south of France is ideal to enjoy the stunning location. Between the mountains and the sea, Nice offers numerous sports and tourist attractions on sand, sea and snow, a rich cultural life with more than 500 events each year, and a diverse international community.

Nice is a UNESCO World Heritage Site and combines the strengths of a world-class technology park (Sophia Antipolis) with the legendary culture, history and charm of the French Riviera and the proximity of Italy and the famous principality of Monaco.

AN URBAN CAMPUS WITH A SEAFRONT SETTING

EDHEC's campus in Nice is located on the Promenade des Anglais and offers an academic environment that is unique in the world.

- **4 areas dedicated to sports, arts and student clubs**
- **20 lecture halls** including a main 350-seat amphitheatre
- **5 IT rooms, a language laboratory, a trading room, an e-learning space**
- **a 100m² business incubator**
- **3 restaurants**

AN INTERNATIONAL, EXPERIENTIAL AND HIGHLY INDIVIDUAL PROGRAMME

Your 10-month journey includes:

-  6 months of core **strategic foundation courses**
-  1 month of **electives**
-  1 month **specialisation track**
-  2 month **tailored MBA project**
-  **2 international learning expeditions**

-  5 months of **Sustainable Impact Challenge**
-  Personalised **Lead360 programme** throughout your MBA experience
-  Option to fast-track or to **extend your EDHEC experience** with an internship or international exchange
-  Optional free French lessons up to 30h per semester

STRATEGIC FOUNDATIONS

During your first 6 months, gain a global business vision which allows you to understand and apply relevant strategic frameworks, ask the right questions and make informed, impactful decisions





PERSONALISE YOUR PROGRAMME

Go deeper into your chosen field or develop new skills and perspectives with:

- **a choice of electives,**
- **a specialisation track,** and
- **a tailored MBA project.**

LEAD WITH CONFIDENCE

The Lead360 personal & career development programme prepares you for the next step in your post-MBA journey and provides you with the necessary personal and leadership skills and qualities that you will need as you build your professional career.

SEPT	OCT	NOV	DEC	JAN	FEB	MAR	APR	MAY	JUNE	JULY-DEC
 BUILD YOUR STRATEGIC FOUNDATIONS						PERSONALISE & SPECIALISE				 Extend your MBA experience through an internship or international academic exchange
						Electives	Specialisation Track & Learning expedition	Tailored MBA Project		
 SUSTAINABLE IMPACT CHALLENGE			Sustainable Learning expedition							
 LEAD 360° - YOUR PERSONAL & CAREER DEVELOPMENT PROGRAMME										

A PROGRAMME BUILT ON SUSTAINABLE IMPACT

At EDHEC, we ensure that your whole curriculum includes an **integrated learning journey encompassing sustainability, social impact and ethical & principled leadership** both in class and across the school.

SUSTAINABLE IMPACT CHALLENGE

Working in teams, the 5-month Sustainable Impact Challenge encourages you to put into practise your MBA experience to tackle a real-life issue.

From defining together with your team the scope of your project, researching and knowledge-gathering through to pitching your final solution, the Sustainable Impact Challenge will put your teamworking, leadership and business acumen to the test.

From start-ups to global brands, each year a wide range of organisations join the Impact Challenge including businesses like **IBM, SAP, Somfy, Caisse d'Épargne** and **Kautex**.

INSPIRING IMPACTFUL LEADERS

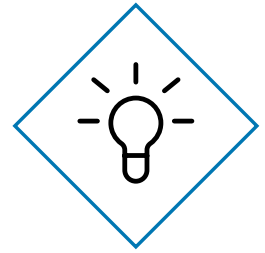
You will have many opportunities both in and outside the curriculum to develop your knowledge and experience on the key social, societal and environmental issues:

- **Sustainability Learning Expedition:** an immersive 1-week trip to explore how European businesses are leading and innovating on ESG strategies
- **Business-critical Issues:** Dedicated courses on key business issues including Climate Change & Carbon Pricing, CSR, Sustainability, Business Ethics, Sustainable Business Models, Diversity & Inclusion
- **An integrated learning journey:** In addition to a range of specific courses tackling key sustainability issues, our entire curriculum has been re-designed to integrate ESG into essential courses like Strategy, Finance, Supply Chain & Operations
- Option to focus on sustainability for your **MBA Project**



PERSONALISE, SPECIALISE

TAILOR YOUR PROGRAMME TO MATCH YOUR GOALS



Choose your specialisation track.



DIGITAL INNOVATION & AI TRACK

- Managing Innovation & Digital Transformation
- IBM AI & Digital Innovation: Design thinking, AI, Business transformation and use cases
- Digital Industry Acceleration Project
- Learning Expedition



INTRA & ENTREPRENEURSHIP TRACK

- Innovating New Products & Services
- Building a Scalable Business
- Financing New Ventures
- Marketing New Ventures
- Learning Expedition



INTERNATIONAL FINANCE TRACK

- Sustainable Finance
- International Corporate Finance
- Climate Change & Finance
- Learning Expedition

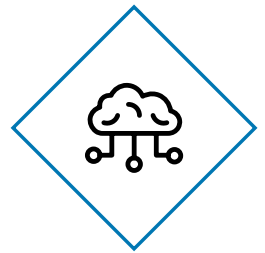


GLOBAL LEADERSHIP TRACK

- Managing Innovation & Digital Transformation
- Positive Psychology of Leadership
- Managing Global Projects
- Learning Expedition

Courses and electives are subject to change as we continually refresh content to ensure business & societal relevance.

CHOOSE THE BEST ELECTIVES FOR YOUR FUTURE



Our electives offer you a choice of intensive courses and skills-focussed modules designed to help you develop new, business-critical knowledge or extend your existing expertise. It is your MBA, so you choose the options which are best for your future.

Examples include:

**CASE STUDIES
IN CORPORATE
FINANCE**



**STRATEGIC MERGERS
& ACQUISITIONS**

**CRIMINAL RISK
MANAGEMENT**



**STRATEGIC
FORESIGHT**

**DATA
VISUALISATION**



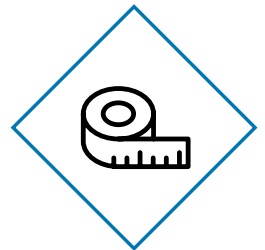
**SALES & BUSINESS
DEVELOPMENT**

**DIGITAL
MARKETING**



Please note that options may change and are subject to availability.

PUT INTO ACTION YOUR NEW SKILLS WITH YOUR TAILORED 8-WEEK MBA PROJECT



**CONSULTING
PROJECT**



**INTERNSHIP/
JOB REPORT**



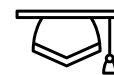
BUSINESS PLAN



**SUSTAINABILITY
PROJECT**



**ACADEMIC
EXCHANGE**



THESIS



YOUR PERSONALISED CAREER & LEADERSHIP DEVELOPMENT SUPPORT

The **Lead360** personal & career development programme has been specifically designed to prepare you for the next step in your post-MBA journey and your future leadership career by helping you to develop the necessary skills and qualities you will need to **drive your career and lead with confidence and conviction in an ever-changing, complex and diverse environment.**

CREATING STRONG RELATIONSHIPS	DIVERSITY & INCLUSION	COMPELLING COMMUNICATION	BUILDING EFFECTIVE TEAMS	CAREERSMART™
1. Outdoor Team Building Seminar	1. Intercultural Awareness	1. Convincing Presentations: Seminar + Personalised Feedback Sessions I & II	1. Building Effective Teams Seminar	1. Intro to CareerSMART®
2. Connecting and Building Relationships			2. Team Work Review I	2. Essential skills: presenting self online, CVs and cover letters, goal setting
3. Initiating Relationships: Practical Skills for networking	2. Diversity: includes awareness of fault lines & biases, acting inclusively	2. Negotiation Skills	3. Team Work Review II	3. Advanced skills: networking, interview techniques, external mock interviews, salary negotiation



LEAD 360 ELECTIVE WORKSHOPS: PERSONALISE YOUR DEVELOPMENT*

- Agile leadership
- Boosting your leadership confidence
- Leading with humility
- Building resilience for stressful & demanding environments
- Power & influence



INTEGRATIVE LEARNING

- Assessed Case Exercise
- 360° assessment and group coaching

COACHING (PERSONAL, LEADERSHIP, CAREER)

- Career guidance and support
- Programme advice & Guidance

OPTIONAL FRENCH CLASSES

- Free French lessons up to 30h per semester

* Electives may change and are subject to availability



“Personal development, enhancing potential, developing talents... it’s all at the heart of the EDHEC Global MBA. Together with the personal and team coaching, MBA participants benefit from the expertise of professional counsellors in Finance, Career transition, Consulting, Entrepreneurship, Social Media, Technology, Strategic marketing and MBA Leadership Development Programmes.”

Spencer Hamilton

Head of MBA Career & Corporate services

AFTER YOUR EDHEC GLOBAL MBA

A TRANSFORMATIONAL EXPERIENCE

Each year, we are proud to see our alumni begin their post-MBA journey across the world – our programme is an ideal opportunity to take your career in a new direction, whether this means changing countries, industries, functions or all three.



81%

changed location



69%

changed industry



77%

changed function



78%

work in Europe



92%

received a job offer within 3 months of graduation

51% made a triple jump
(changed location, industry and function)

CONNECTING CANDIDATES WITH COMPANIES

GLOBAL MBA HACKATHON

The Global MBA hackathon offers an incredible opportunity to put your learnings and experience to the test to solve real-life issues for some of the world's biggest brands.

JOB SHADOWING

Join a senior director or leader for a unique 5-day experience and see first-hand the complex role of leadership whilst demonstrating your capabilities and offering new insights and perspectives to make an impact.

COMPANY CASE STUDIES, PROJECTS & PRESENTATIONS

From presentations and live in-class cases through to the Sustainable Impact Challenge, you will connect with different industries, sectors and organisations to give you maximum insights and exposure to help you identify your next career goal.

NETWORKING

Fireside Chats, the MBA lounge and the Senior Speaker series provide you with the opportunity to gain leadership and expert insights on a wide range of topics including diversity and inclusion, sustainability, innovation, leadership and entrepreneurship

COMPANY TREKS

Each year, we organise a series of company treks dedicated to specific industries or renowned business hubs which give you a unique opportunity to meet and hear from senior leaders and experts. Past examples include Amsterdam, Dublin, London and Paris.

ALUMNI SPOTLIGHTS

Throughout the year, our alumni return to campus (in person or virtually) to share their experiences and provide insights and inspiration to help you make your next career move.

EDHEC FOR LIFE

EDHEC Alumni network contributes to developing EDHEC's reputation worldwide and enhances its relationship with the global business community. As an EDHEC Global MBA participant, you automatically become a member of the EDHEC Alumni network for life.

57,000 ALUMNI AROUND THE WORLD TO STRENGTHEN YOUR NETWORK

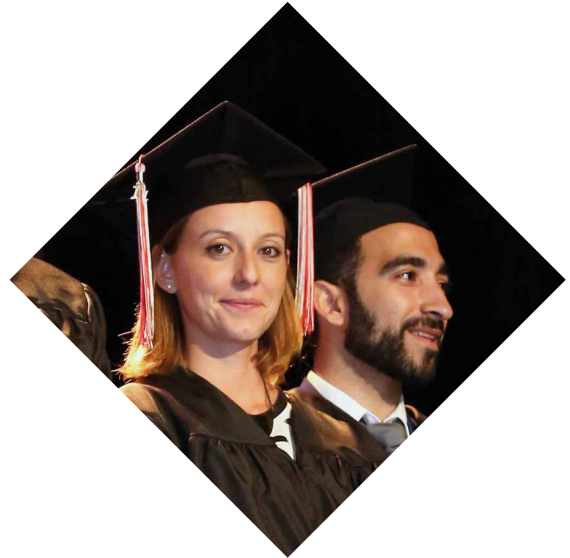
EDHEC Alumni Association links all generations of alumni in order to develop professional and personal links.

100 CLUBS IN MORE THAN 40 COUNTRIES

500 EDHEC Ambassadors coordinate professional clubs all around the world. These clubs drive local networks through numerous professional and social events.

450 EVENTS WORLDWIDE EVERY YEAR

EDHEC Alumni organises numerous events every year, creating strong ties between the different generations and extending the reach of the network to local decision-makers.



"The network that you build during your MBA is incredible and the support, connections, advice and inspiration offered continues after you graduate as you are part of a truly global alumni family. As you develop your career, move to new countries, industries or even set up your own business, you know that you already have a business network and community to offer invaluable support to make your relocation or transition as smooth as possible. I am proud to be an EDHEC alumna and it's always really rewarding to be able to get involved with events and activities to help inspire the next generation of EDHEC MBA's."

Ksenia Sukhova
Global MBA Alumna,
Manager, Baringa London

"EDHEC helped me to understand who I really was and what I would excel at in life. It helped me to make the right decisions. There's an overall culture of agility at EDHEC; it really gave me the opportunity to make important decisions early in my life, decisions that still affect my life today."

Michael Burke
CEO of LVMH Fashion Group
EDHEC Master Alumnus




RESEARCH

EDHEC FOR BUSINESS

As a driver of change for future generations, EDHEC strives to transmit knowledge that is useful — for students, for business partners, for communities — and that has the capacity to transform our society.

RESEARCH WITH IMPACT

EDHEC's mission is to transform society through the education of future generations of leaders and innovators. The school devotes more than 20% of financial resources to research, a reflection on the central role research plays in the school's business model. EDHEC's students and business partners benefit from the contributions made by the school's research centres and the guidance they provide in terms of domestic and international decision-making.



"It's our responsibility to ensure EDHEC's research resonates not only with the students in our academic programmes, but also with society. It's vital to be rooted in the real world, to use our knowledge to assist with future transformations, and to work relentlessly for change."

Michael Antioco, PhD
Dean of Faculty and Research,
EDHEC Business School

Research & areas of expertise



Augmented Law

The EDHEC Augmented Law Institute provides cutting-edge research on the law and legal professions transformation, alongside hybrid training programmes, and a proprietary Legal Talent Management platform.



Criminal Risks Management

The EDHEC Criminal Risks Management chair conducts immersive research into the impact of criminal organisation activity on businesses.



Diversity & Inclusion

The Open-Leadership for Diversity and Inclusion chair is dedicated to improving diversity and inclusion in organisations.



Family Business

The EDHEC Family Business research centre offers an holistic approach to family business.



Foresight, Innovation & Transformation

The EDHEC Chair for Foresight, Innovation and Transformation, focuses on the development of companies' ability to embrace uncertainty.



Infrastructure Investment

The EDHEC-Infrastructure Investment generates unique index data and analytics to measure the risk-adjusted performance of unlisted infrastructure investments, and benchmarks for infrastructure investors.



Leadership Development

The EDHEC Leadership Development chair offers interactive learning methods to enable managers to develop responsible leadership skills.



Management in Innovative Health

Launched in 2022, the Management in Innovative Health chair is a joint research chair with EDHEC and Bristol Myers Squibb to better understand the consequences of the digital revolution on the healthcare ecosystem and to advance e-health for the benefit of patients.



New Generations

The EDHEC New GenTalent Centre studies generations Y and Z at work and acts as a laboratory for creating ties between recent graduates and companies.



Sustainable Finance

The EDHEC-Risk Institute is a leading global academic think-tank in the field of investment solutions (pension crisis, ESG). This area of expertise is also covered by the EDHEC-Scientific Beta "Advanced factor and ESG investing" research chair.

The EDHEC Business School Association and its Foundation announce the signature of an agreement for the sale of a 93% interest in Scientific Beta to Singapore Exchange Ltd. The sale vindicates EDHEC's research-funding model and provides a lasting guarantee of the School's financial independence.

TAKE THE NEXT STEP

Scholarships and financial aid can be critical factors when it comes to embarking on your MBA, so we aim to make the process as simple and transparent as possible. When you submit your basic profile/CV to our team, a recruitment manager will get back to you to explain the next steps, answer your questions and advise you on scholarships and financing.

Total tuition fees: €52,500

These are the full tuition fees for September 2025 for the entire length of your Global MBA. Lifetime EDHEC Alumni membership is also included in your tuition fees. Flights costs for learning expeditions are additional.

Scholarships

Our scholarships are guaranteed until the **31st January 2025** for the September 2025 intake. Scholarship amounts are awarded based on the strength of your overall application.

UP TO
-40%

EXCELLENCE

For candidates with GMAT scores or equivalent aptitude tests of 635 or above

UP TO
-40%

WOMEN IN LEADERSHIP

For inspiring women candidates with high leadership potential and a commitment to creating an equitable world

UP TO
-30%

MAKE AN IMPACT

For candidates with an ESG background, entrepreneurial project or demonstrated commitment to innovative & sustainable business

UP TO
-20%

CULTURAL DIVERSITY

For outstanding candidates from any country with international experience or ambitions. Only 3 scholarships per country available

Honorary Awards & Fellowships

THE SWATI KANSAL MEMORIAL SCHOLARSHIP FOR WOMEN OF IMPACT

This scholarship is generously funded in memory of Swati Kansal, 2019 EDHEC Global MBA graduate who made an outstanding contribution to her school as a highly engaged student, an MBA class representative, and President of the MBA Digital Innovation Club.

- One scholarship of €10,000 will be awarded per intake.

EDHEC MBA FORTÉ FELLOWSHIP AWARDS

As a Forté Foundation partner school, we are proud to offer several Forté Fellowship awards of between €10,000 - €20,000 to support outstanding, high potential women candidates.

THE EDHEC INTERNATIONAL ADVISORY BOARD FELLOWSHIP

The scholarship is funded by the EDHEC International Advisory Board (IAB), which is an international group of business and academic leaders who provide strategic guidance related to all aspects of the school.

Each year, the EDHEC IAB will support:

- The granting of one "MBA Fellow scholarship" of €5,000
- The granting of one "Honorable mention" of €2,000



ADMISSIONS REQUIREMENTS

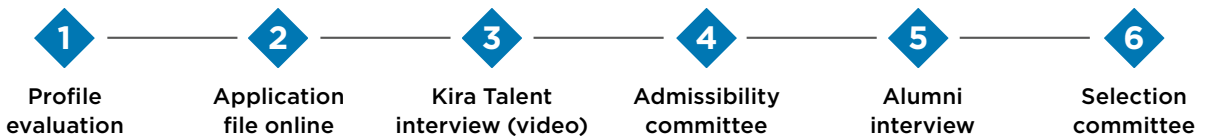
The culture at EDHEC's Global MBA is an important part of the experience, and we believe it's essential to have a personal admissions process to maintain it. Our recruitment team considers every candidate carefully, making sure that you're a good match for the programme, and that the programme is the right fit for you, too.

GENERAL REQUIREMENTS

- **Bachelor's degree** or equivalent
- **Minimum of 3 years working experience**
- **Strong command of written and spoken English** with proof of level: TOEFL, TOEIC, IELTS, Cambridge qualifications (B2 First, C1 Advanced) and Duolingo are accepted (Test results must be less than 2 years old)
- **GMAT, GRE, Tage Mage, Executive Assessment or equivalent test.** Exemptions may be considered for: candidates who have a STEM-related degree or relevant professional qualification

Applications are evaluated holistically.

ADMISSION PROCESS



We have a rolling admissions process and we strongly advise you to apply as early as possible to secure your place. On average the process will take around 3 weeks from the moment we receive your completed application file.

Your contacts:



Françoise Evangelisti
Italy, Latin America and India



Julie Le Gouëz
France



Nikki Harle
North America, Europe, Asia-Pacific and Middle-East



Yulia Prokopiv
Europe and Africa

EDHEC GLOBAL MBA RECRUITMENT & ADMISSIONS OFFICE

393, Promenade des Anglais, BP 311606202 Nice Cedex 3 - France

Tel: **+33 (0)4 93 18 45 66**

Email: mba.admissions@edhec.edu



#7

**Business School
in Europe**

Financial Times 2023

9,400
Students

57,000
Alumni in 140
countries

#5

**worldwide for
Open programmes**

Financial Times 2024

130

Nationalities

#13

**Business School
in Europe**

Bloomberg Businessweek
Best B-schools 2023/24

175

**International
professors &
researchers**

Make an impact

EDHEC.EDU

mba.admissions@edhec.edu

LILLE

24, avenue Gustave Delory
CS 50411
59057 Roubaix Cedex 1 – France
Tél: +33 (0)3 20 15 45 00

NICE

393, Promenade des Anglais
BP3116
06202 Nice Cedex 3 – France
Tél: +33 (0)4 93 18 99 66

PARIS

16-18, rue du 4 Septembre
75002 Paris – France
Tél: +33 (0)1 53 32 76 30

LONDON

10 Fleet Place, Ludgate
London EC4M 7RB
United Kingdom
Tél: +44 (0)207 332 56 00

SINGAPORE

1 George Street
#15-02 Singapore 049145
Tél: +65 (0)6438 0030



© EDHEC July 2024. Non-binding document. Pictures: H. Hourcade © M. Bertrand © M. Blach © M. Cage © R. Frewin © S. Pliatti @Shutterstock.com. Design: erwanrouxel.fr