

# EMPLOYER ENGAGEMENT SERVICES

---

2024 - 2025



*Make an impact*

**OUR SERVICES  
& EVENTS**

- P 8/10 -



**OUR STUDENTS : YOUR  
FUTURE TALENT**

- P 5/7 -



**EDHEC INTERNATIONAL  
BUSINESS CLUB**

- P 11 -



**OUR SCHOOL &  
PROGRAMMES**

- P 3/4 -



**THE TEAM**

- P 12/13 -



**TABLE OF  
CONTENTS**

## KEY FIGURES



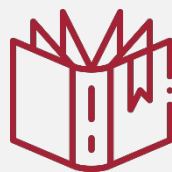
**5**  
campus



**8,600**  
students including 35% of international students



**+120**  
partners companies



**23**  
programmes



**110**  
nationalities



**+50,000**  
Alumni worldwide



**39**  
double degrees

## RANKINGS

**1<sup>ST</sup>**

CAREER CENTRE & ALUMNI NETWORK IN FRANCE  
*FINANCIAL TIMES 2024*

**2<sup>ND</sup>**

BBA IN FRANCE  
*CHALLENGES 2024*

**3<sup>RD</sup>**

GRANDE ÉCOLE IN FRANCE  
*CHALLENGES 2023*

**4<sup>TH</sup>**

MASTER IN MANAGEMENT WORLDWIDE  
*FINANCIAL TIMES 2024*

**6<sup>TH</sup>**

MASTER IN FINANCE WORLDWIDE  
*FINANCIAL TIMES 2024*

**7<sup>TH</sup>**

BEST BUSINESS SCHOOL IN EUROPE  
*FINANCIAL TIMES 2023*

Challenges<sup>s</sup>

FT FINANCIAL TIMES

## BACHELOR IN BUSINESS ADMINISTRATION (BBA)

- Business Management BBA Track
- Global Business BBA Track
- Online BBA Track

## MASTER IN MANAGEMENT & MSc

### FINANCE

- International Finance
- Accounting & Finance
- Corporate Finance & Banking
- Financial Engineering
- Climate Change & Sustainable Finance

### BUSINESS MANAGEMENT

- Creative Business & Social Innovation
- Data Analytics & Artificial Intelligence
- Entrepreneurship & Innovation
- Global & Sustainable Business
- LLM in Law & Tax Management
- Management & Leadership
- Marketing Analytics
- Marketing Management
- Strategy, Organisation & Consulting

### GLOBAL ECONOMIC TRANSFORMATION & TECHNOLOGY (GETT)

#### USA/Asia Pathway: Innovation & Entrepreneurship

##### MASTER 1:

- S1 : Lille, France
- S2 : Séoul, South Korea (SKK Business School)

##### MASTER 2:

- S5-S6 : San Francisco Bay Area, USA (Berkeley Haas)

#### Europe Pathway: Tech & Data

##### MASTER 1:

- S1 : Paris, France
- S2 : Berlin, Germany (ESMT Berlin)

##### MASTER 2:

- S5-S6 : London, UK (Imperial College Business School)

### DATA SCIENCE & AI FOR BUSINESS

##### MASTER 1:

- IT, coding, database management, statistic model development, machine learning

##### MASTER 2:

- Option for MSc Financial Engineering, MSc Data Analytics & Artificial Intelligence, MSc in Marketing Analytics or Double Degree with EURECOM

## MASTER OF BUSINESS ADMINISTRATION (MBA)

- Global MBA
- Executive MBA

### STUDENTS PROFILES



**50%**  
Female



**50%**  
Male



**60**  
Nationalities

# MASTER STUDENTS CLASS OF 2023



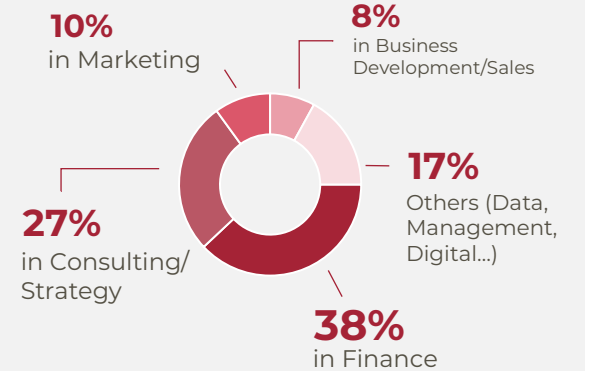
LILLE CAMPUS

### GREENER GENERATION



**52%** Work on projects with a CSR dimension

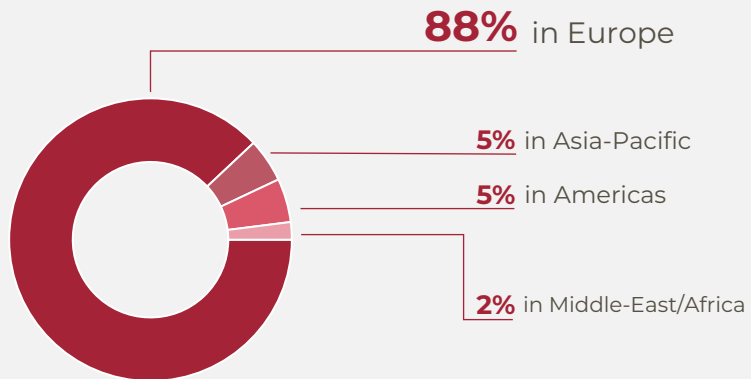
### FUNCTION



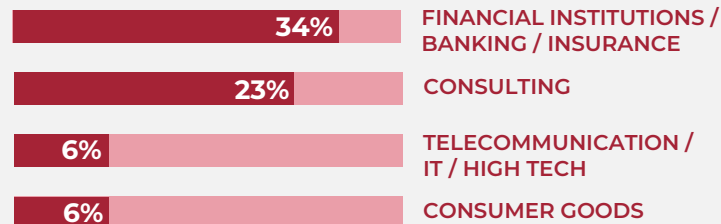
### LOCATION

**36%** of international graduates work outside their home country

**21%** of French graduates work abroad



### SECTOR



### KEY FIGURES



**78%** Landed a job during or less than 2 month after leaving school

### STUDENTS PROFILES



**33%**

Female



**67%**

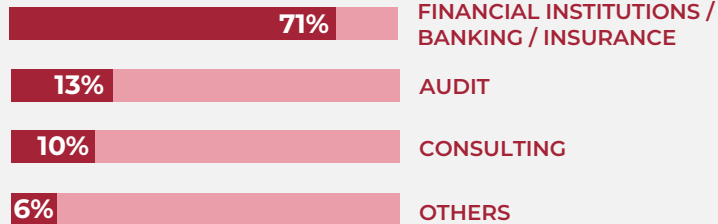
Male



**37**

Nationalities

### SECTOR



### GREENER GENERATION



**49%** of jobs include CSR missions

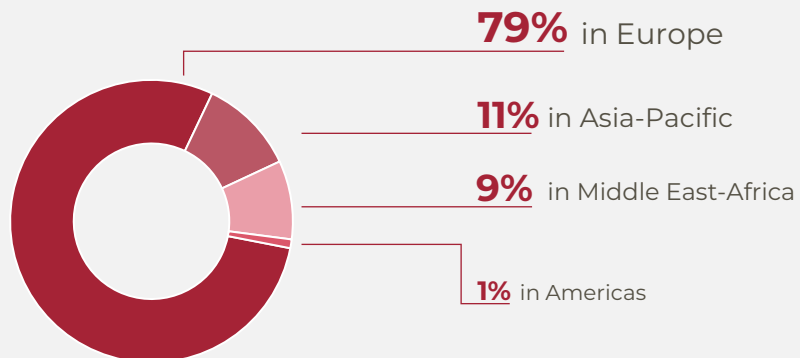
### LOCATION

**81%**

of international graduates work outside their home country

**24%**

of French graduates work abroad

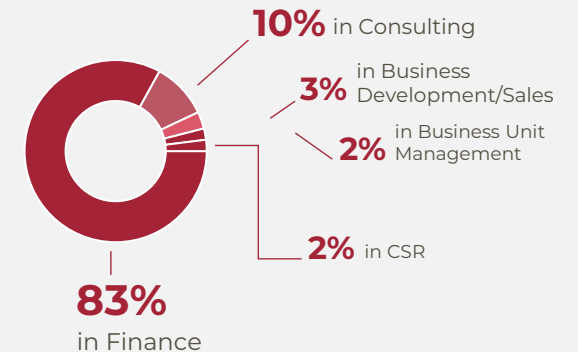


# FINANCE STUDENTS CLASS OF 2023



NICE CAMPUS

### FUNCTION



### KEY FIGURES



**79%**

Landed a job during or less than 2 month after leaving school

### STUDENTS PROFILES



**52%**

Female



**48%**

Male



**41**

Nationalities

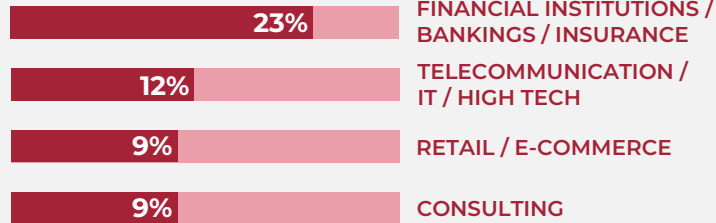
**65%**

CONTINUED STUDIES

**35%**

ENTERED THE JOB MARKET

### SECTOR



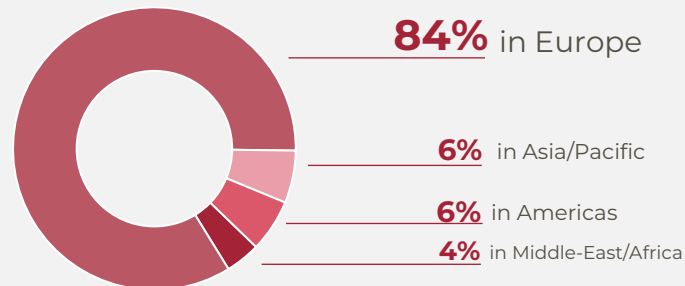
### LOCATION

**34%**

of French graduates work abroad

**46%**

of graduates work outside their home countries

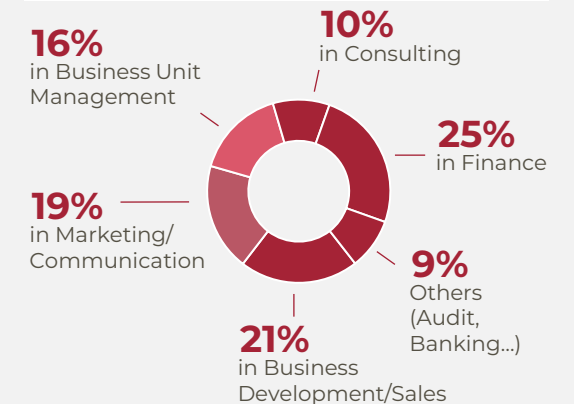


### GREENER GENERATION

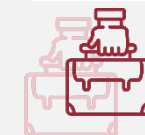


**43%** of jobs include CSR missions

### FUNCTION



### KEY FIGURES



**63%** landed a job before leaving school

**16%** created their own companies

# BBA STUDENTS CLASS OF 2023



LILLE & NICE CAMPUS

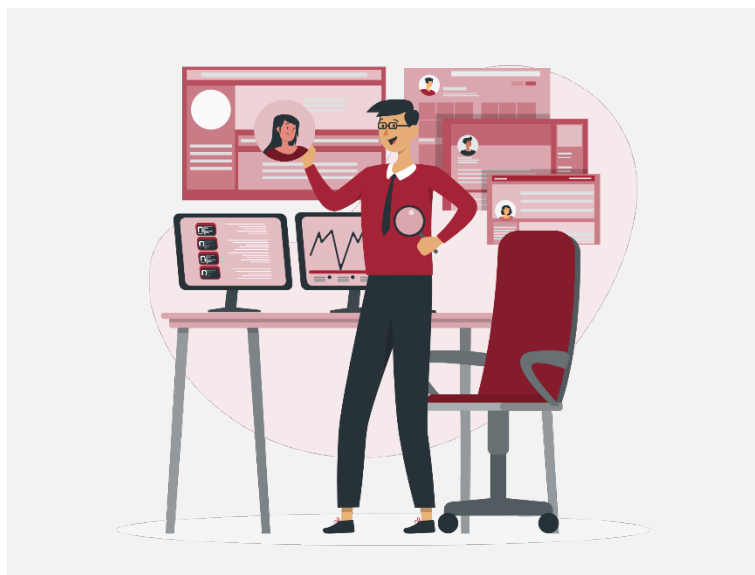
## RECRUITMENT & BRANDING

- ◆ Internship & Job Offers
- ◆ Talent Sourcing & CV Books
- ◆ Events:
  - Finance Career Days; On-campus presentations, interviews; Recruitment sessions;
  - CSR and Diversity series...
- ◆ Events Abroad: Company Treks



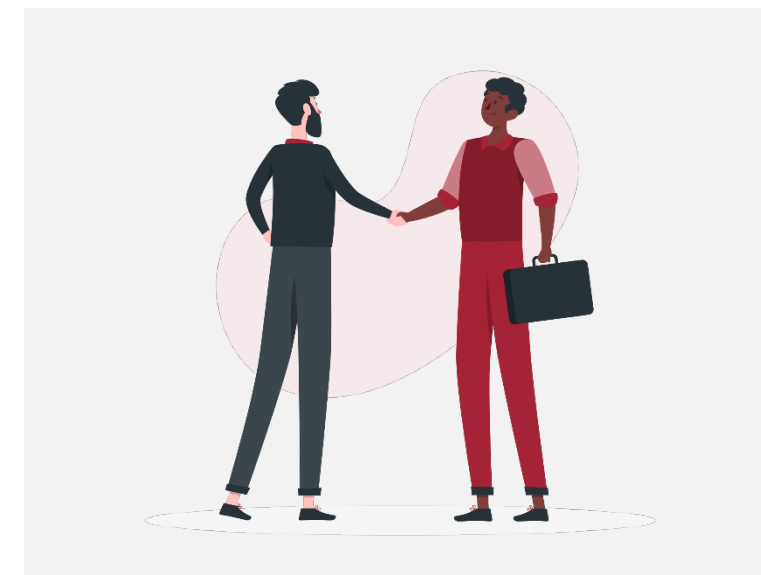
## PARTNERSHIPS

- ◆ EDHEC International Business Club
- ◆ Corporate Programme Sponsors
- ◆ Learning Partnerships



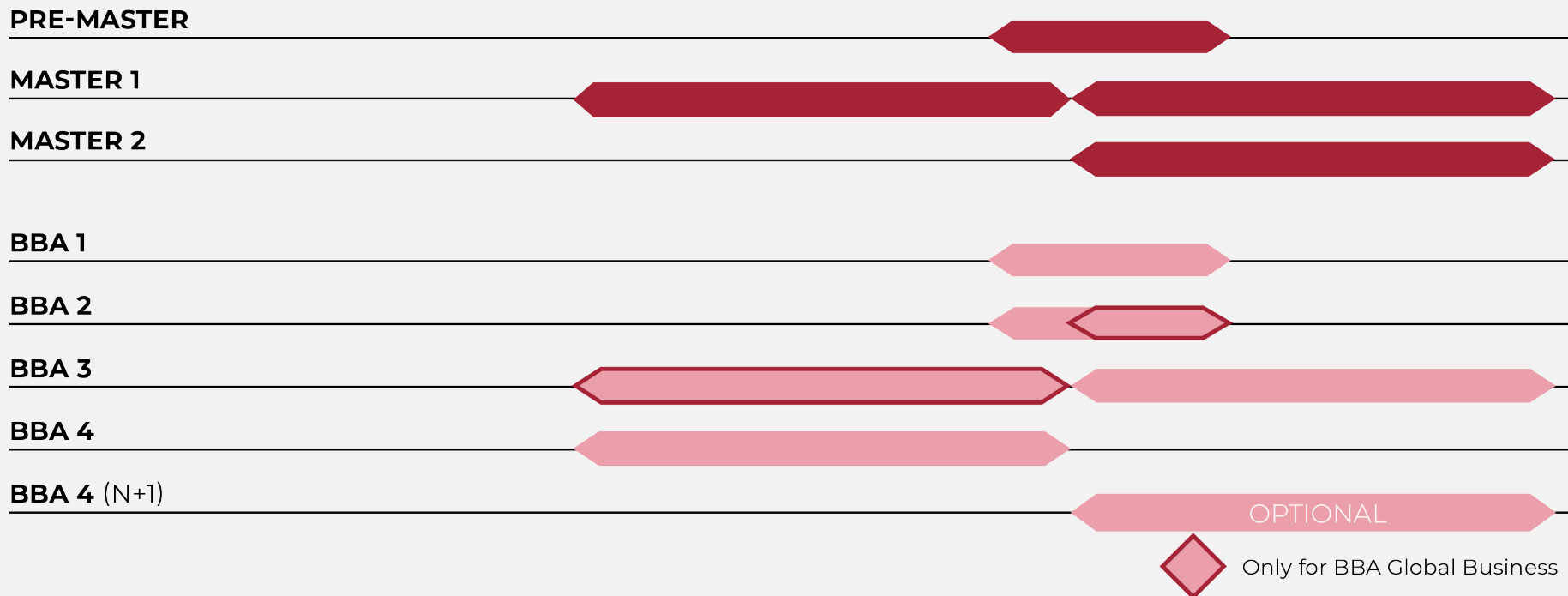
## TALENT DEVELOPMENT

- ◆ Career Booster Programme : Assessment Centre, Events and Workshops
- ◆ Open Innovation
- ◆ Inclusion & Diversity Challenge





2024
2025  
 SEP | OCT | NOV | DEC | JAN | FEB | MAR | APR | MAY | JUN | JUL | AUG | SEP | OCT | NOV | DEC



## SUMMER INTERNSHIPS



2-3 months



BBA 1,2,3 & Master students

## GAP YEAR INTERNSHIPS



Up to 12 months  
(2x6 months)



BBA 3,4 & Master 1 students

## END OF STUDIES INTERNSHIPS



6 months –  
BBA 4 & Master 2 students

## GRADUATE PROGRAMMES



BBA 4 & Master 2 students

## FINANCE CAREER DAYS

A 2-day event that brings together recruiters and our best talent from Finance.

- ◆ Employer branding, recruitment & networking
- ◆ 800+ Finance Masters students
- ◆ 12<sup>th</sup> & 13<sup>th</sup> September 2024, Nice Campus

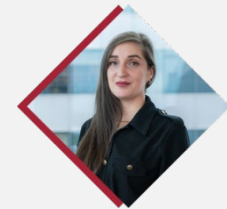
## COMPANY TREKS 2024-2025

Host a group of selected students at your company to provide them an insight into your organisation and jobs.

- ◆ Employer branding, recruitment & networking
- ◆ Pre-selected Finance & Business Management Masters students
- ◆ October onwards, London, Paris & Dublin

## CONTACT US

**FOR FURTHER INFORMATION AND CUSTOMISED EVENTS, DON'T HESITATE TO CONTACT OUR EVENTS MANAGER:**



**MARIA-ALEJANDRA LARIOS**  
[maria-alejandra.larios@edhec.edu](mailto:maria-alejandra.larios@edhec.edu)

[DOWNLOAD OUR 2024-2025 EVENTS CALENDAR >](#)

## STAND ALONE COMPANY PRESENTATION

- ◆ Employer branding, recruitment & networking
- ◆ BBA, Masters & MBA students from all tracks
- ◆ All year around, on campus or online

## RECRUITERS BREAKFAST

An event aimed to bring together HR professionals and Talent Managers from our Top Recruiters to connect with their peers and share best practices.

- ◆ Sharing best practices & networking
- ◆ HR Professionals & Talent Managers, by invitation only
- ◆ June 2024, London Campus

## CSR DIVERSITY SERIES

- ◆ Employer Branding
- ◆ BBA, Masters & MBA students from all tracks
- ◆ October 2024 onwards, Lille Campus & online

Finance Career Days



SEPT 2024

Industry Career Days



OCT 2024

CSR & Diversity Series



OCT 2024

NOV 2024

EDHEC Forum



JAN 2025

FEB 2025

Virtual Fair



MAR 2025

SEPT 2024



Virtual Fair

OCT 2024



Company Treks

OCT 2024

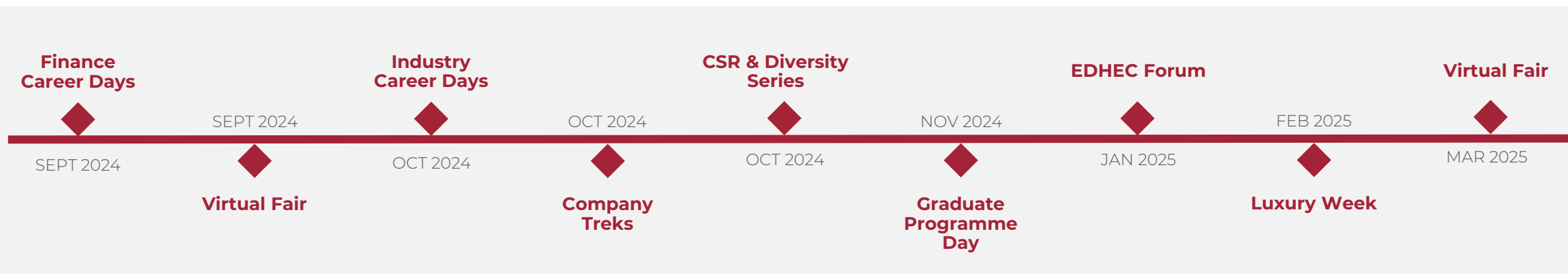


Graduate Programme Day

JAN 2025



Luxury Week



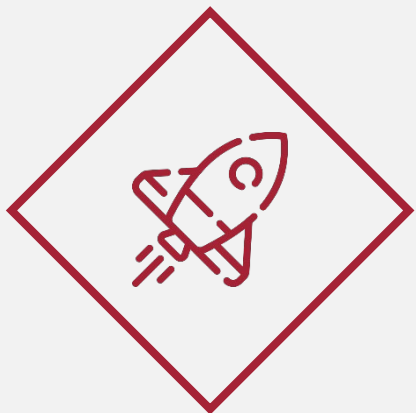
## ENHANCE YOUR BRAND AWARENESS & VISIBILITY



## GAIN PRIVILEGED ACCESS TO EDHEC TALENT & EVENTS



## BOOST YOUR IMAGE & RECRUITING EFFORTS



## BENEFIT FROM A CLOSE RELATIONSHIP & CUSTOMISED SERVICE



	Smart	Premium	Sapphire
Your dedicated Key Account Manager	◆	◆	◆
Access to CV Database	◆	◆	◆
Online Events	1	1	2
On Campus Recruiting and Employer Branding Events	1	2 (Sponsorship)	2 (Sponsorship)
1 to 1 Events	◆	◆	◆
Meet your peers (Breakfast, Round Table)	◆	◆	◆
Promote your company and your logo on our portal	◆	◆	◆
Share opportunities / Events on our portal	◆	+ Direct emails to target students	+ Direct emails to target students
CV Books	1	5	5
CSR & Diversity Series		◆	◆
Recruitment Sessions		◆	◆
Masterclasses			◆

CONTACT US FOR MORE INFORMATION ON THE PACKAGES AND PRICES >



**FERNANDA DIAZ**

Director, Careers & Employer Engagement

## INTERNATIONAL CORPORATE RELATIONS & COUNTRY MANAGERS



MARKETING & PARTNERSHIPS

**FANNY EDELGA**

[fanny.edelga@edhec.edu](mailto:fanny.edelga@edhec.edu)

CENTRAL & EASTERN EUROPE, MONACO,  
NETHERLANDS, NORDICS, SWITZERLAND,  
UK, US-EAST COAST



EVENTS & PARTNERSHIPS

**MARIA-ALEJANDRA LARIOS**

[maria-alejandra.larios@edhec.edu](mailto:maria-alejandra.larios@edhec.edu)

AFRICA, BELGIUM, CANADA, GERMANY,  
ITALY, LATIN AMERICA,  
LUXEMBOURG, MIDDLE EAST, SPAIN, UK

## CHINA



**SISI PAN**  
sisi.pan@edhec.edu

## INDIA



**NILESH GAIKWAD**  
nilesh.gaikwad@edhec.edu

## SINGAPORE



**JOYCE CUFF**  
joyce.cuff@edhec.edu

## UK & IRELAND



**AUDREY HAVERKAMP**  
audrey.haverkamp@edhec.edu

## US - WEST COAST



**PATRICIA VINANT**  
patricia.vinant@edhec.edu



THANK YOU

---

Contact us for more information at:  
[CorporateConnections@edhec.edu](mailto:CorporateConnections@edhec.edu)

*Make an impact*

